

Queensland Ambulance Service performance report

Our Performance

The Queensland Ambulance Service (QAS) serves over four million Queenslanders across our vast state of 1.77 million square kilometres. Our services are delivered from 295 ambulance response locations across Queensland.

The QAS reports on the demand for ambulance services by counting the number of incidents we respond to, and assesses performance by measuring response times.

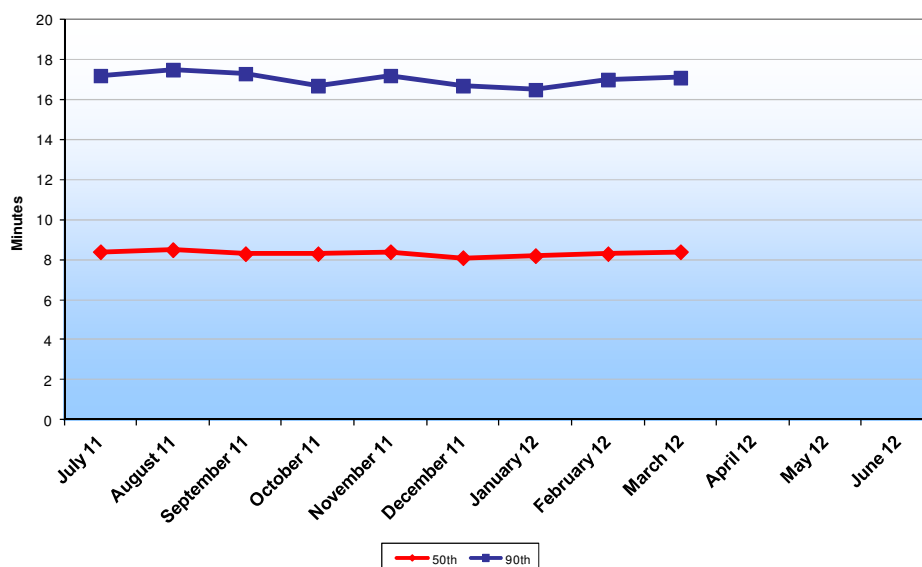
Performance Measurement

Ambulance Services across Australia report information on response times in the Commonwealth Government's Report on Government Services (ROGS). This means that Queensland's performance can be compared with other states.

The ROGS report measures how quickly 50% of ambulance vehicles are able to arrive on scene (this is called the 50th percentile), and again how quickly 90% of ambulance vehicles are able to arrive on scene (the 90th percentile) for a Code 1 (life threatening) emergency medical incidents.

Ambulance response times: 2011-2012 financial year

Code 1 First Unit on Scene Response Times
Financial Year 2011 -2012
50th Percentile & 90th Percentile



Queensland Ambulance Service performance report

Current regional and statewide performance: 2011-2012 financial year

The QAS delivers operational services from seven regions across Queensland.

Operational performance and activity is reported at two levels; in each of the seven QAS regions and statewide.

Performance: Code 1 response times – 1 July 2011 to 31 March 2012

Region	50 th Percentile (minutes)	90 th Percentile (minutes)
Northern Region	7.3	14.4
Central Region	7.5	19.5
South Western Region	7.5	20.0
North Coast Region	8.6	19.0
Brisbane Region	8.6	16.7
South Eastern Region	8.7	16.5
Far Northern Region	7.6	16.0
State	8.3	17

Source: QAS Case Information Reporting

Activity: Incidents – In the period 1 July 2011 to 31 March 2012, the Queensland Ambulance Service (QAS) responded to **622,893** incidents across Queensland. This includes Codes 1 – 4 and casualty room attendances.

Region	Number of Incidents
Northern Region	51,415
Central Region	53,158
South Western Region	36,753
North Coast Region	87,290
Brisbane Region	214,529
South Eastern Region	127,063
Far Northern Region	39,927
Aeromedical & Special Operations Response Team	12,758
State	622,893

Source: QAS Case Information Reporting

